

Front Panel Control Buttons

Arrow and Button Selection

Prev and Next navigate through the various controls, such as Aspect and Position. When a control is selected, its LED blinks on and off. Arrows change values for the control you selected.

Size

The Size and Position controls let you select exactly what part of the computer image you want to output to video. When the Size LED is blinking, adjust the position of the lower right corner of the selection. Use the four arrows to control size.

Short cut: Press and hold up and down (or right and left) arrows at the same time to reset to maximum possible size.

Position

When the Position LED is blinking, adjust the position of the upper left corner of the selection. Use the four arrows to control position. Press and hold for faster movement.

Short cut: Press and hold left and right arrows at the same time to reset the H position to default values. Press and hold up and down to reset V position.

Full Screen

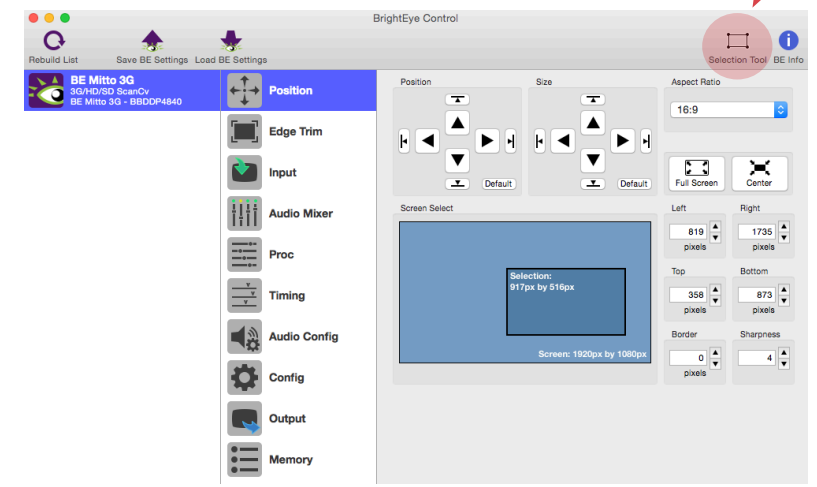
With Position or Size LED blinking, press and hold the up, left and right arrows at the same time to go to full screen.



Software Control

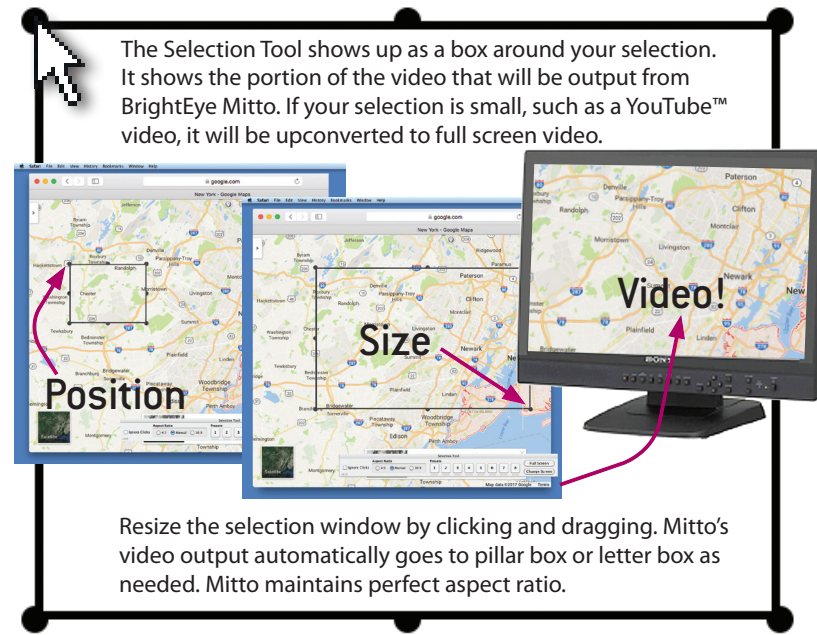
BrightEye Control software provides complete and intuitive control of the BrightEye Mitto including handles for timing, video format, and video level adjustments.

Click the Selection Tool button in BrightEye Mac or PC to bring up the Selection Tool.



Video Selection Tool

Click and drag to move and resize selection



The Selection Tool shows up as a box around your selection. It shows the portion of the video that will be output from BrightEye Mitto. If your selection is small, such as a YouTube™ video, it will be upconverted to full screen video.

Resize the selection window by clicking and dragging. Mitto's video output automatically goes to pillar box or letter box as needed. Mitto maintains perfect aspect ratio.

www.ensembledesigns.com +1 530.478.1830 8/2017

Who's Ensemble?

Purveyors of Fine Video Gear – Loved By Engineers Worldwide

In 1989, a former television station engineer who loved designing and building video equipment, decided to start a new company. He relished the idea of taking an existing group of equipment and adding a few special pieces in order to create an even more elegant ensemble. So, he designed and built his first product and the company was born.

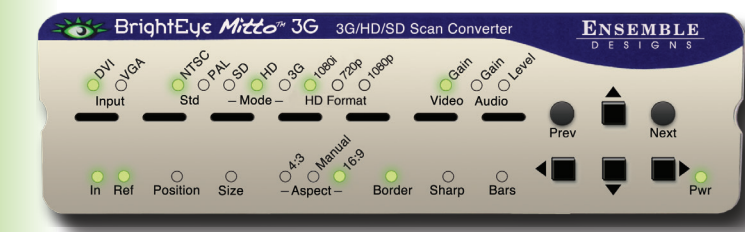
We listen to you – just tell us what you need and we'll do our best to build it. We are completely focused on you and the equipment you need. Being privately held means we don't have to worry about a big board of directors or anything else that might take attention away from real business. And, you can be sure that when you call, a real person will answer the phone. We love this business and we're here to stay.

BrightEye and Avenue signal processing gear is used worldwide in broadcast, production, post and sports facilities. Call us for proven and reliable HD up/downconverters, routers, multiviewers, frame syncs, audio embedders, video converters, logo inserters, protection switches and sync pulse generators. And, you can relax knowing that each product has a full five-year warranty.

QuickStart Guide



3G/HD/SD High Performance Scan Converters



Superior Quality, Easy-To-Use



You Opened the Box and...

Inside You Found:

- Your Mitto
- One USB cable
- Two VGA to DVI adaptors
- One modular power supply (100-230 VAC)
- The BrightEye software and user manual CD

You Will Need the Following:

- Desktop computer with monitor (optional) or a laptop computer (PC or MAC)
- Additional cables as required by your studio configuration

1. Install the Software

The BrightEye Control software is included on CD.

Insert the CD into your computer and follow the prompts. If you are updating, please uninstall the old version first.

The latest software version and the manual are free at <http://brighthouse.com>

2. Connect the Mitto

- Connect a USB cable from your PC or Mac computer to the Mitto.
- Connect the Mitto's DVI/VGA Loop Out connector to the computer monitor's input.
- Connect the monitor output of the computer to the Mitto DVI/VGA Input connector.
- Connect the Mitto's SDI Out or Composite Out BNC to a broadcast television production switcher, router, video monitor or other video destination.
- If using audio, connect the computer's audio output to the Mitto's Audio In.
- If desired, connect your reference signal to the Ref In. Mitto's output is genlocked and fully timeable to this reference.
- Connect power to the Mitto.

3. Configure the Mitto

Select a Resolution

Set the resolution of your computer monitor. For the best video output from BrightEye Mitto, set your computer monitor to the highest resolution that's compatible with Mitto. For best results choose 1920 x 1080 or 1024 x 768.

Select Video Format

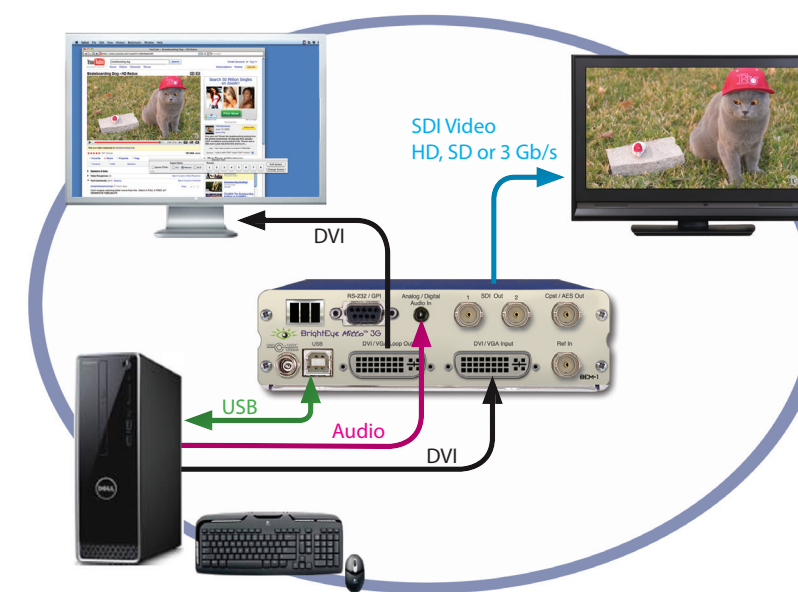
From the BrightEye Control software or the Mitto's front panel, configure the desired output format from the Output menu. Select the Standard (NTSC or PAL), Mode (SD, HD, 3G), and HD format if using HD.

Then select the appropriate aspect ratio: 16:9, 4:3 or manual mode.

Alternate Ways to Mitto!

There are other ways to use BrightEye Mitto in your TV station or video facility:

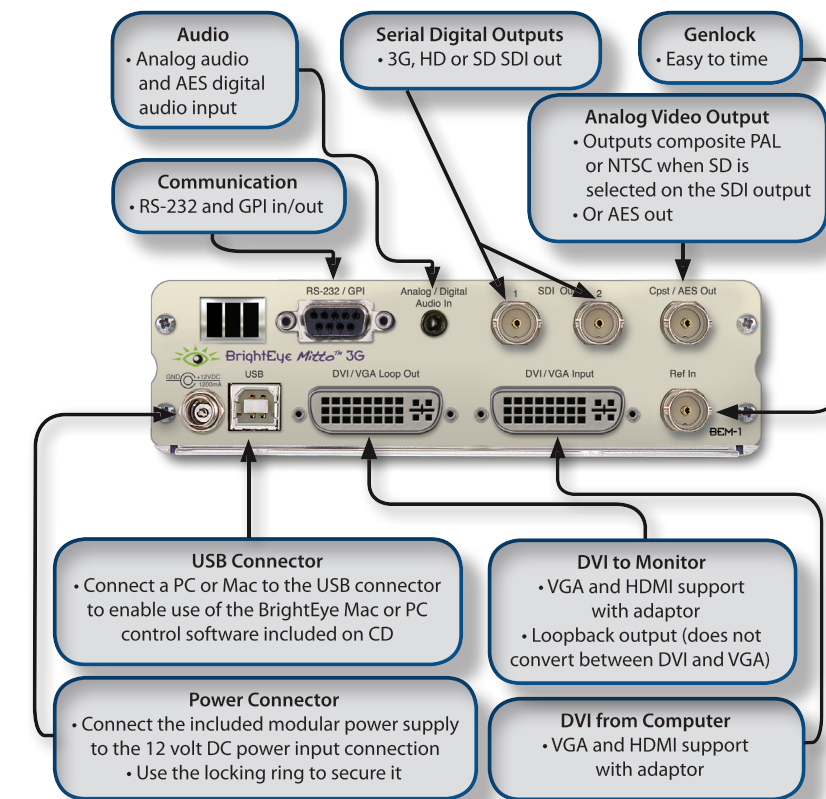
- It can be used with a laptop. Configure your laptop for use with an external monitor. Connect Mitto in place of the external monitor.
- It can be used without a computer monitor.
- It can be used with or without the Mitto software.
- It can be controlled from the Mitto panel control buttons only.
- It can be used with iPhone™ and iPad™.



Output Stunning Video

All of the detail, none of the flicker

- YouTube™, Skype™, and any video playing back from a computer or iPhone
- Weather radar, maps • Facebook™ • Twitter™
- Viewer emails, software demos, financial data



The BrightEye Mitto Family has multiple models to choose from so you can select the perfect combination of features and price for your video facility. The diagram above shows Mitto model BEM-1. Rear connections vary with other models.