



BrightEye™ PC

Control Application Software Data Pack

ENSEMBLE
DESIGNS

Rev 1.0 SW v1.0.0

INTRODUCTION

This data pack describes installation and operation of the BrightEye PC Control Application Software option. The BrightEye PC remote control option allows remote control, configuration and monitoring of the BrightEye modules from a PC.

The following sections are included in this data pack:

- BrightEye PC Description
- BrightEye PC Installation
 - Connecting a PC to BrightEye Modules
 - Installing the BrightEye PC Application
- BrightEye PC Operation
 - The Mainscreen
 - Adding New BrightEye Modules
 - File Pulldown Menus
 - Option Pulldown Menus
 - Help Pulldown Menus

BRIGHTEYE PC DESCRIPTION

The BrightEye PC Control Application Software is a PC-based remote control application that accompanies every BrightEye module. It allows you to completely control, configure and monitor any BrightEye module or any number of modules connected to a common USB hub. BrightEye PC can be installed on any PC running a Windows 2000 or XP operating system with USB compliant 1.0 support or higher.

BrightEye PC features include the following:

- Control and monitor all BrightEye modules in your system from one location.
- Adjust input/output sources, video levels, and all other module parameters from a GUI interface.
- Access additional advanced parameters not available on front module controls.
- Store module configuration to a file and download to the same module or another module of the same type.
- Download updated module software.

PC interface to the BrightEye modules is made through a standard USB connection. A single module can be connected directly to a PC or any number of modules can be connected and controlled through a standard USB hub. USB requirements for the PC are given in this data pack.

The BrightEye PC application comes on a CD-ROM and is easy to install and configure. All menus and pulldown functions for setting up BrightEye PC are explained and illustrated in this data pack. The individual menus for setting parameters on each BrightEye module are explained and illustrated in the data pack you receive with each module.

INSTALLATION

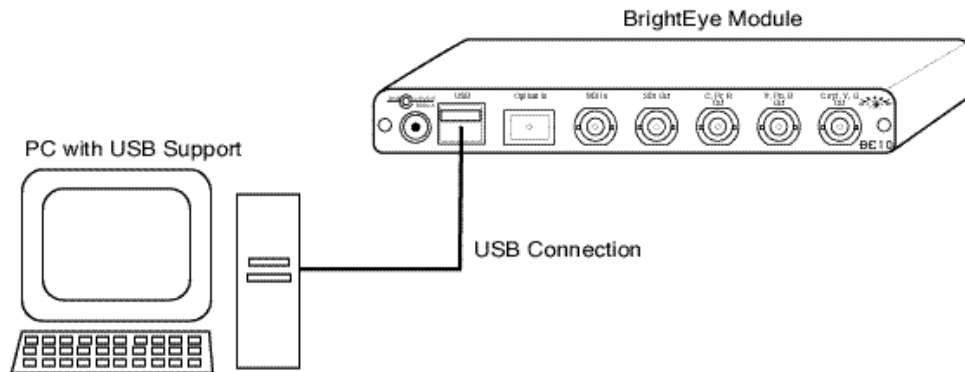
This section of the data pack explains connecting your PC to BrightEye modules and installing the software application onto your PC.

Connecting to BrightEye Modules

BrightEye PC can control a single BrightEye module or any number of modules connected to a USB hub.

Connecting to a Single BrightEye Module:

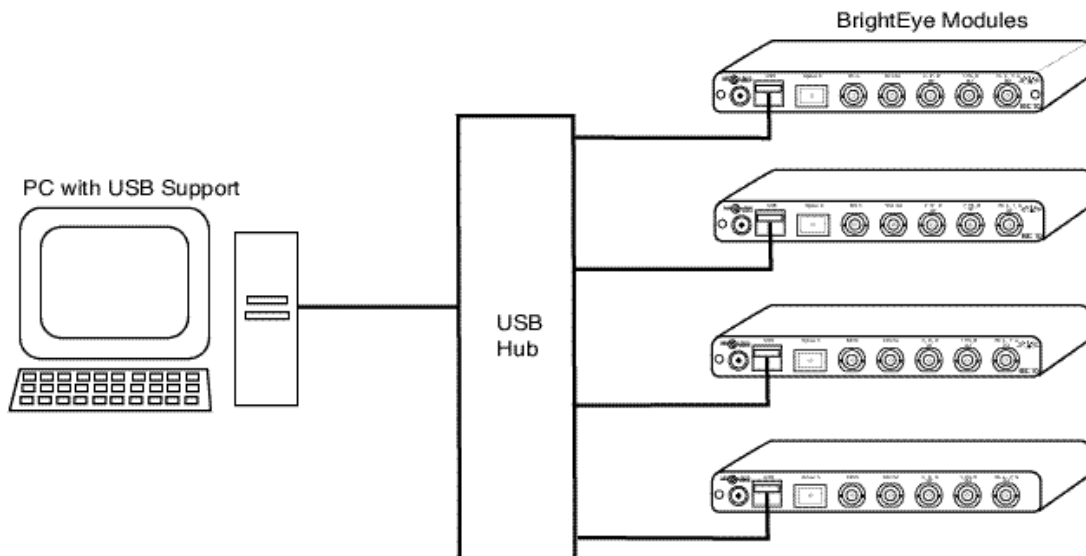
Connect the USB port from the PC that will control the BrightEye module to the USB connection on the rear of the BrightEye module as shown in the illustration below.



Controlling a Single BrightEye Module

Connecting to Multiple BrightEye Modules:

Connecting to multiple BrightEye modules requires a USB hub or computer with the correct number of ports to access each module. Connect the PC USB port to the hub. Connect each of the USB ports from the BrightEye modules to a hub port. Any combination of BrightEye modules can be used. An example of multiple connections through a USB hub is shown below.



Controlling Multiple BrightEye Modules

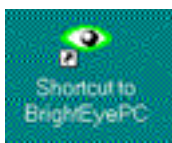
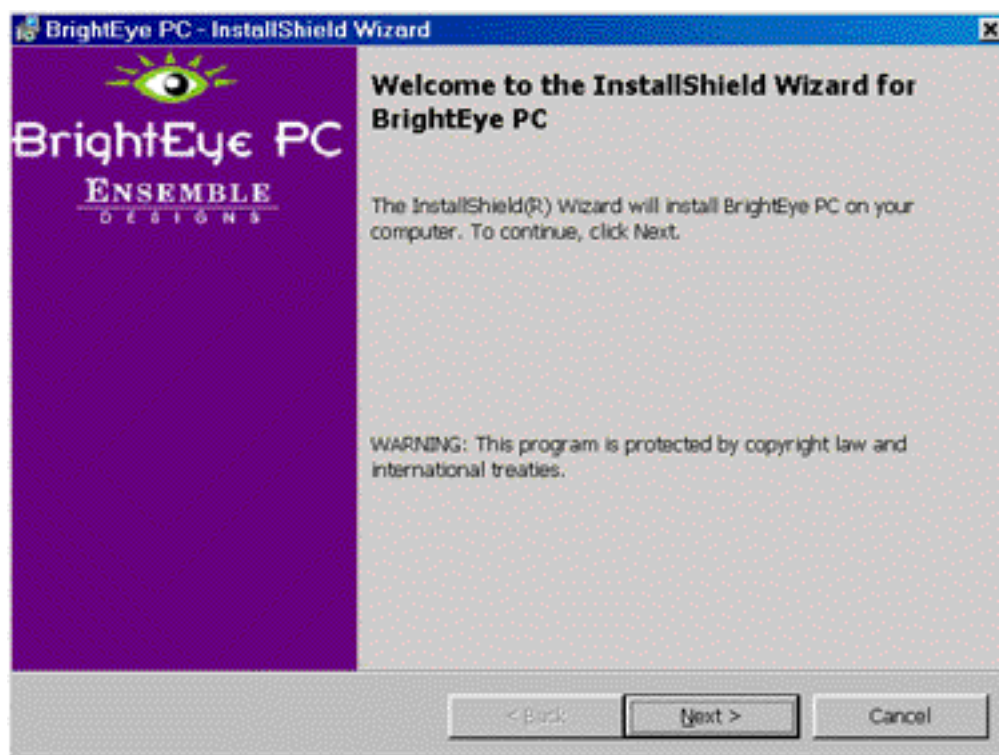
Installing the BrightEye PC Application

The BrightEye PC application comes on a CD-ROM and has the following PC system requirements:

- PC Running any Windows 2000 or XP operating system with USB 1.0 compliant support.
- USB Port
- CD-ROM Drive

Follow the instructions below to install BrightEye PC:

1. Insert the BrightEye PC CD-ROM into your CD-ROM drive.
2. The CD should autorun and open the **InstallShield Wizard** which will appear as shown below. If not, open the CD-ROM drive and click on **Setup.exe**.
3. Follow the prompts to take you through the installation procedure. Install the application in the desired directory as prompted.

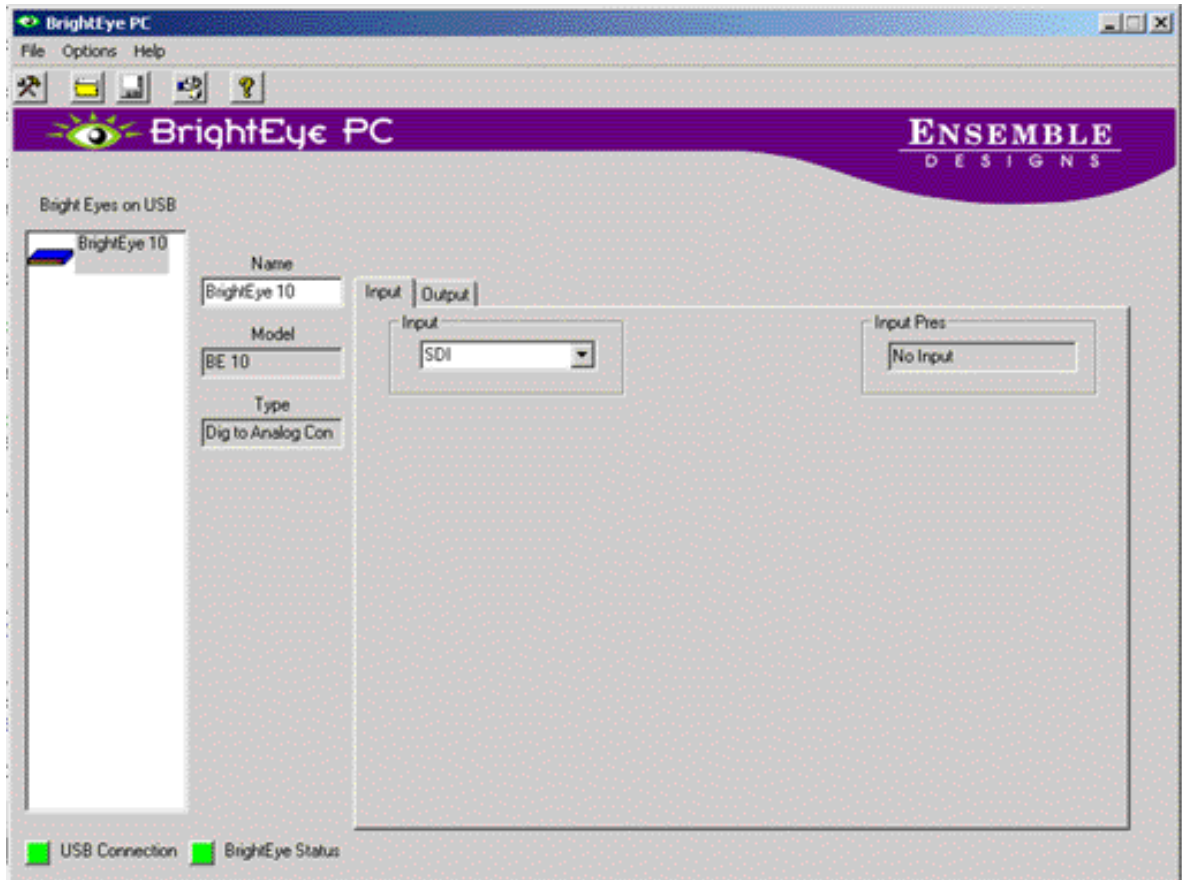


4. The installation process will give you a shortcut to the BrightEye PC application under the Windows **Start** button or you may create a shortcut to your desktop if desired similar to the one shown at left.

BRIGHT EYE PC OPERATION

The Mainscreen

Open the BrightEye PC application by double-clicking on the BrightEye icon or the desktop shortcut. This will bring up a BrightEye PC Mainscreen similar to the one shown below.



The **BrightEyes on USB** window on the left of the Mainscreen will display all BrightEye modules communicating on the USB port.

You can give each module a unique name by entering it in the **Name** field. The BrightEye **Model** and **Type** will be displayed in read-only fields to identify the selected module.

USB connection status of the PC and the selected BrightEye module is indicated by the **USB Connection** and the **BrightEye Status** indicators at the bottom of the Mainscreen. When the PC is communicating over a USB connection, the **USB Connection** indicator will be green. No communication will display red.

When a BrightEye module is highlighted in the **BrightEyes on USB** list, its USB communication status will indicate green or red on the **BrightEye Status** indicator.

Clicking on a BrightEye module in the list of **BrightEyes on USB** will display that module's information and available menus on the Mainscreen.

Each type of BrightEye module has different menu selections. For current module menu screens, refer to the individual data pack that shipped with the specific module.

NOTE: Some module parameters are only available on BrightEye PC menus and will not be accessible or adjustable on the module front panel controls.

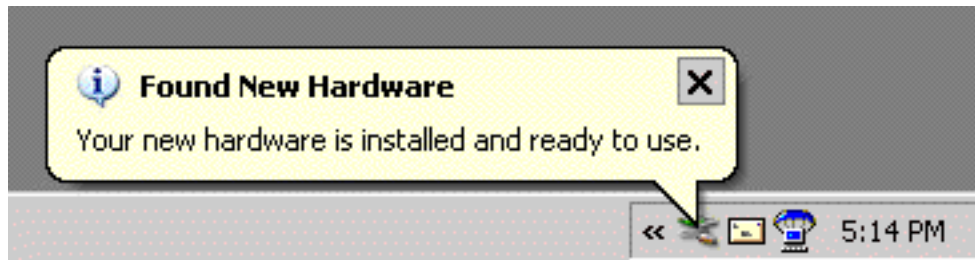
Adding New BrightEye Modules

When a new BrightEye module is added to the PC or the USB hub, a **Found New Hardware** message as shown below will appear at the bottom of the PC screen. The message window will close by itself.

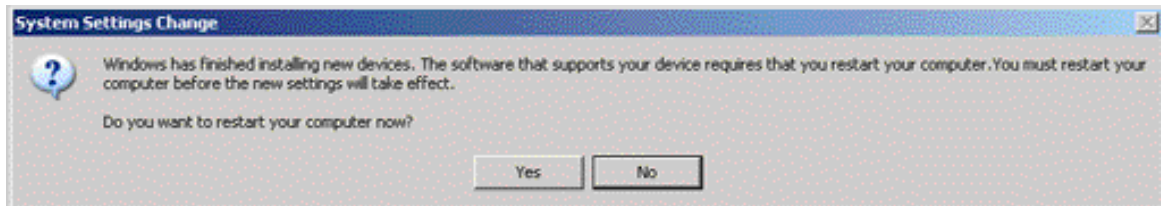


The PC will install the new device. The **Found New Hardware** window will display the message shown below and the new BrightEye device will appear in the **BrightEyes on USB** list on the Mainscreen.

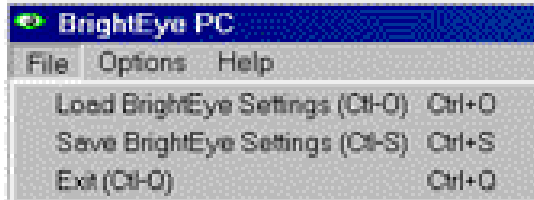
Devices will appear in the list according to their position on the USB hub. Select the new device and assign it a name.



If the **System Settings Change** window shown below appears, the computer does not have to be rebooted. Select **No**.



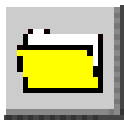
File Pulldown Menus



The **File** pulldown menu shown above contains three functions: **Load BrightEye Settings**, **Save BrightEye Settings** and **Exit**.

Load BrightEye Settings

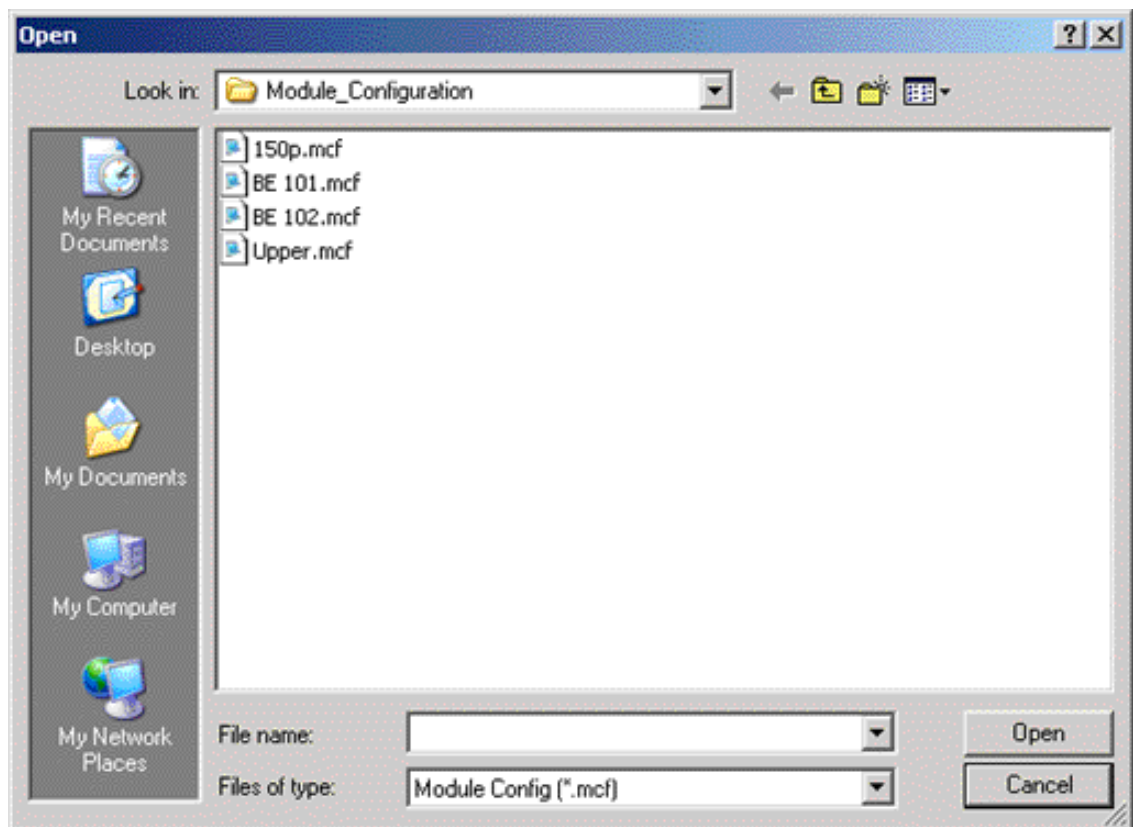
This function allows you to load settings from a saved *.mcf file to the BrightEye selected in the **BrightEyes on USB** list.



This function can also be accessed by clicking on the folder icon (shown at left) at the top of the Mainscreen.

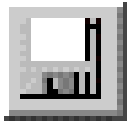
Selecting this function will bring up an **Open** window (shown below) where you can select an *.mcf file to download to the selected module. Only the same module type files can be downloaded to the module.

Highlight a file and select the **Open** button to load it to the selected module.



Save BrightEye Settings

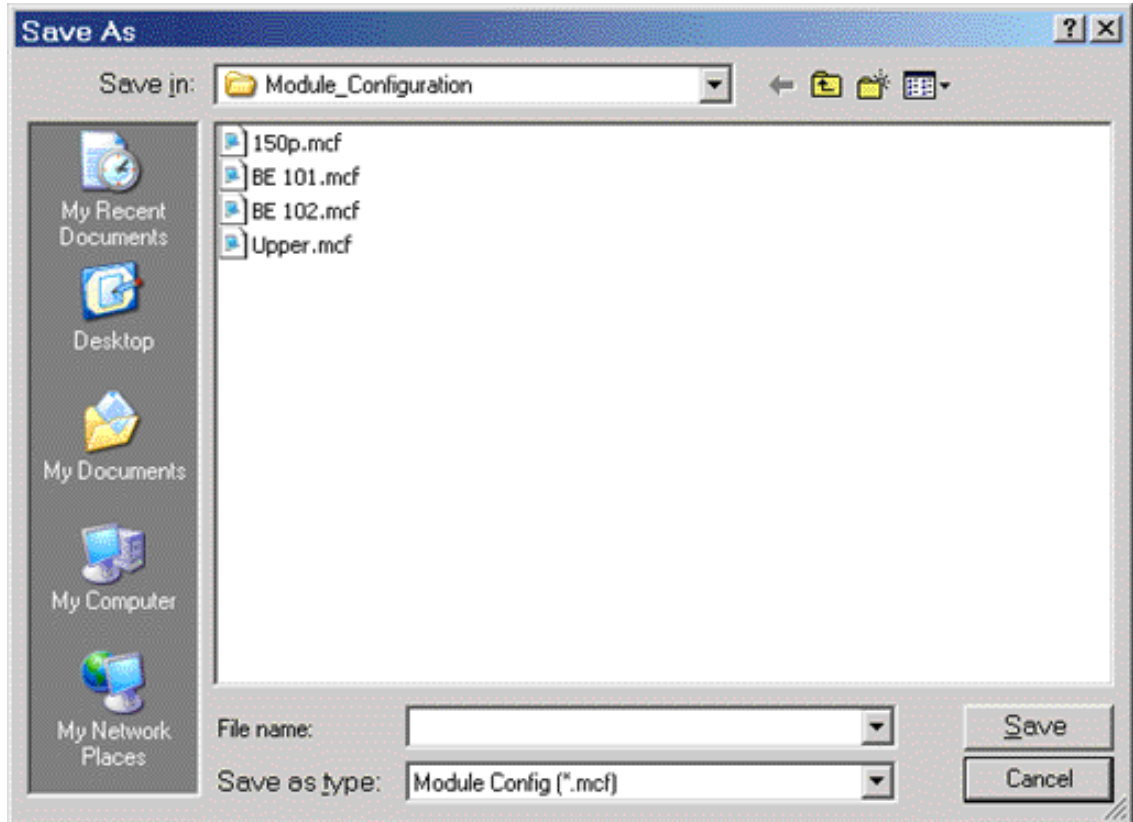
This function allows you to save the selected BrightEye module settings to a file.



This function can also be accessed by clicking on the disk icon (shown at left) at the top of the Mainscreen.

Selecting this function will bring up a **Save As** window (shown below) where you can name a file to save to the selected destination.

Save the file as a **.mcf** with an identifying name for the module type and select **OK**.



Use the **Exit** function to return to the Mainscreen.

Option Pulldown Menus



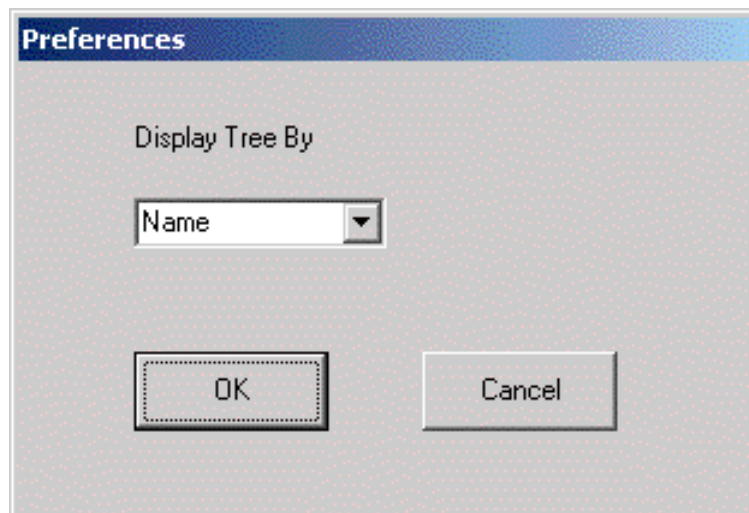
The **Option** pulldown menus include **Preference** and **Update Software**.

Preference

The **Preferences** function shown below allows you to select how you would like to display the BrightEye module tree in the **BrightEyes on USB** list. Select viewing by **Name**, **Model**, or **Type** in the pulldown, then select **OK**.



You may also access this function by clicking the icon shown at left at the top of the Mainscreen.



Update Software

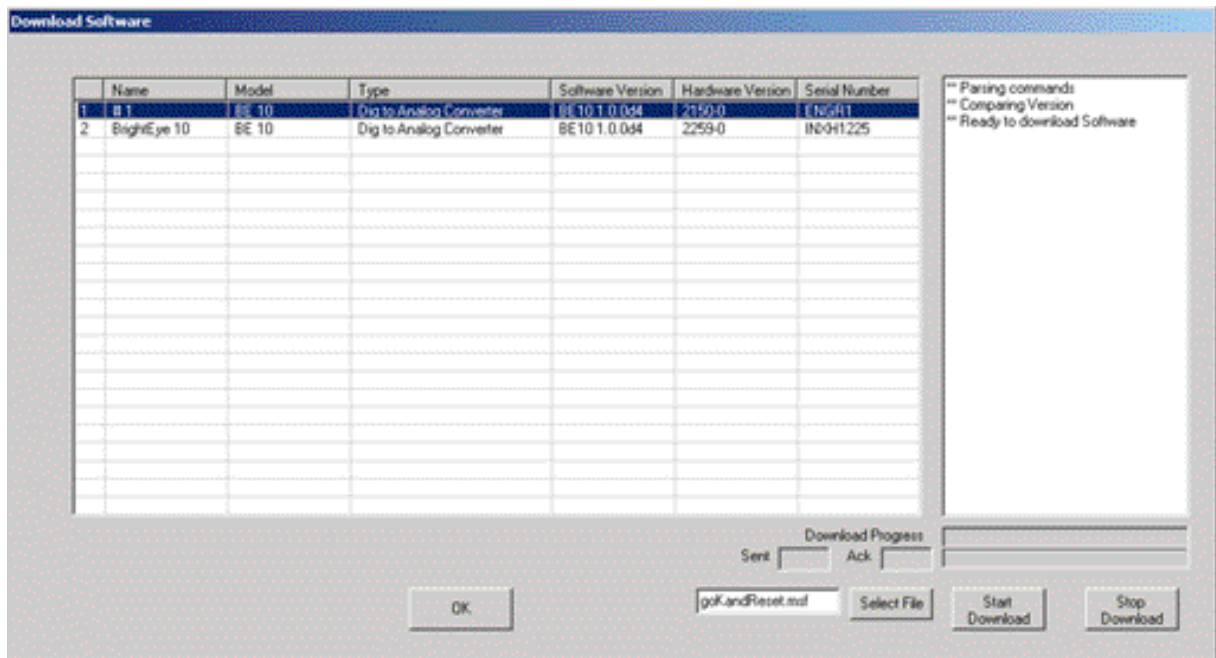
BrightEye module software updates are available periodically to download from the Ensemble Designs web site at www.ensembledesigns.com. The web site also provides technical bulletins, installation and release notes and frequently asked questions about Ensemble products.



To install a new software version, click on the module you want to update in the **BrightEyes on USB** window in the Mainscreen. Select the Update Software pulldown or click the software update icon shown at left.

This will bring up the **Download Software** window shown below. BrightEye modules present in the **BrightEyes on USB** module tree will appear in the list. Each module will be listed and show **Name, Model, Type, Software Version, Hardware Version, and Serial Number**. Highlight the module to be updated.

Use the **Select File** button at the bottom of the Download Software window to open a browser window to locate the software update file. The file will be a *.mcf type. Find the correct file and select **Open**. This will place the selected file name next to the **Select File** button. If you select an incorrect file type for this module, a message will be displayed in the reporting window on the right. Wait for the **Ready to download Software** command to appear in the reporting window before proceeding.



To perform the download, press the **Start Download** button at the bottom right of the screen. You will see the status script in the reporting window describing the progress of the download and a progress bar below it, along with the **Sent** and **Ack** progress bars.

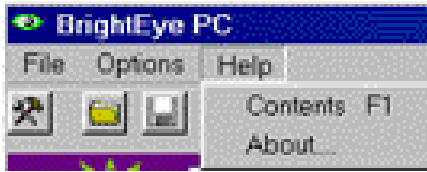
During the software download, the reporting window will show that the module is in kernel mode. At this point, all LEDs on the front of the module being updated will blink twice in a series to show that the module is in kernel mode.

You may stop the download at any time by pressing the **Stop Download** button. This may result in an incomplete download and you will have to either power cycle the module or reload software.

After the download is finished, press the **OK** button in the window. The new software version should now appear in the **Software Version** column of the selected module. The indicator LEDs on the module should be showing normal module status.

NOTE: If module LEDs are still blinking twice in a series, module software did not download properly. Reinstall the software.

Help Pulldown Menus



The **Help** pulldown menu includes the **Contents** and the **About** sections.

Contents

This section gives you an online BrightEye PC manual in pdf format. You will need Adobe Acrobat Reader version 4, 5, or 6 to access this file. You may download a free version of this application for any platform at <http://www.adobe.com>.



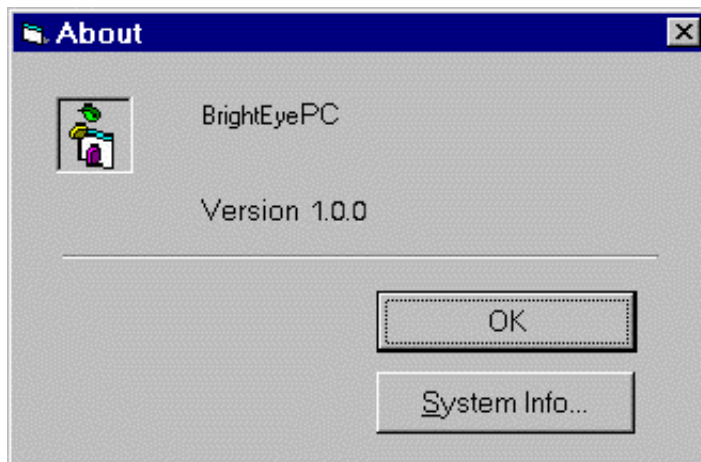
You may also click on the **Help** icon shown at left to view the manual.

About

Select the **About** menu for information on the current version of BrightEye PC installed on your system as shown below.

Select **System Info...** to show an information about the PC.

Select **OK** to close.



WARRANTY AND FACTORY SERVICE

Warranty

Ensemble Designs, Inc. warrants this product to be free from defect in material and workmanship for a period of two years from the date of delivery. During this two year warranty period, Ensemble Designs, Inc. will repair any defective units at Ensemble's expense if the unit should be determined to be defective after consultation with a factory technician.

This warranty is not transferable. Any implied warranties expire at the expiration date of this warranty.

This warranty does not cover a defect that has resulted from improper or unreasonable use or maintenance as determined by us. This warranty is void if there is any attempt to disassemble or adjust factory set presets without factory authorization.

Factory Service

If you require service (under warranty or not), please contact Ensemble Designs and ask for Customer Service before you return the unit. This will allow the service technician to provide any other suggestions for identifying the problem and recommend possible solutions.

You may also refer to the technical support section of the Ensemble web site for the latest information on your equipment at the URL below:

<http://www.ensembledesigns.com/support>

If you return equipment for repair, please get a Return Material Authorization Number (RMA) from the factory first.

Ship the product and a written description of the problem to:

Ensemble Designs, Inc.

Attention: Customer Service RMA #####

870 Gold Flat Rd.

Nevada City, CA 95959 USA

(530) 478-1830

Fax: (530) 478-1832

service@endes.com

<http://www.ensembledesigns.com>

Be sure to put your RMA number on the outside of the box.

