

AVENUE

Avenue™ signal integration system

Pattern Generator Application User Guide



ENSEMBLE

D E S I G N S

Revision 1.0 SW v1.0.0

Contents

OVERVIEW	3
INSTALLING PATTERN GENERATOR	3
To Install Pattern Generator	3
LAUNCHING PATTERN GENERATOR	4
SELECT FORMAT	5
ASSETS	5
Preview Image	6
GENERATE PATTERN	7
SECURE DIGITAL MEMORY CARD	7
WARRANTY AND FACTORY SERVICE	8
Warranty	8
Factory Service	8

OVERVIEW

Use **Pattern Generator** to create test patterns in HD or SD. Assign images, animations and audio files to your test patterns. Image files and animation sequences must be in Targa format. Audio clips must be in .wav format. Preview the files you are assigning to a test pattern, then generate the pattern using the **Go** button.

Generated patterns (.ptn files) are written to a directory that you specify. Next, copy the .ptn files to a Secure Digital (SD) Memory Card. The test patterns on the SD Memory Card can then be inserted into the Avenue 7400, the Avenue 9400 or the BrightEye 57.

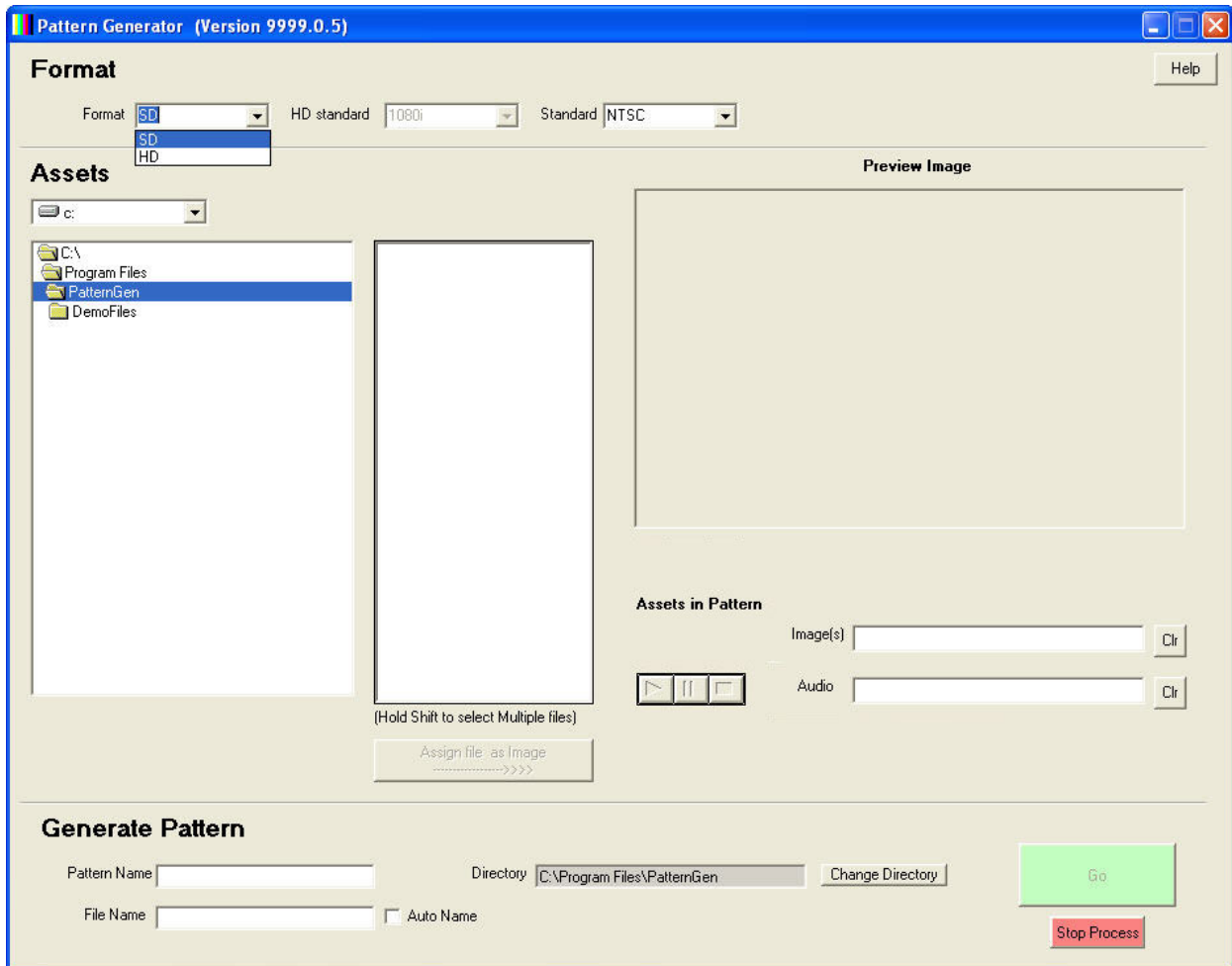
INSTALLING PATTERN GENERATOR

To Install Pattern Generator

1. Insert the Pattern Generator CD into the CD-ROM drive of a PC.
2. Double-click the **Pattern Generator setup icon** (setup.exe) to run the installer. The **PatternGen InstallShield Wizard** launches.
3. Click **Next**. The current settings for the installation display, showing the setup type, the destination folder and user information.
4. Click **Install**. The PatternGen installer begins the installation process.
5. After the **Install Shield Wizard Completed Window** displays, click **Finish** to exit the **Install Shield Wizard**.

LAUNCHING PATTERN GENERATOR

Double-click the **PatternGen.exe** icon. The default location for this file is C:\Program Files\PatternGen. The **Pattern Generator Window** displays.



SELECT FORMAT

From the Format drop-down menu, select the format you want to use -- HD or SD. If you select HD, select one of the following choices from the **HD standard drop-down menu**:

- 1080i
- 720p
- 1080p

If you select SD, select one of the following choices from the **SD standard drop-down menu**:

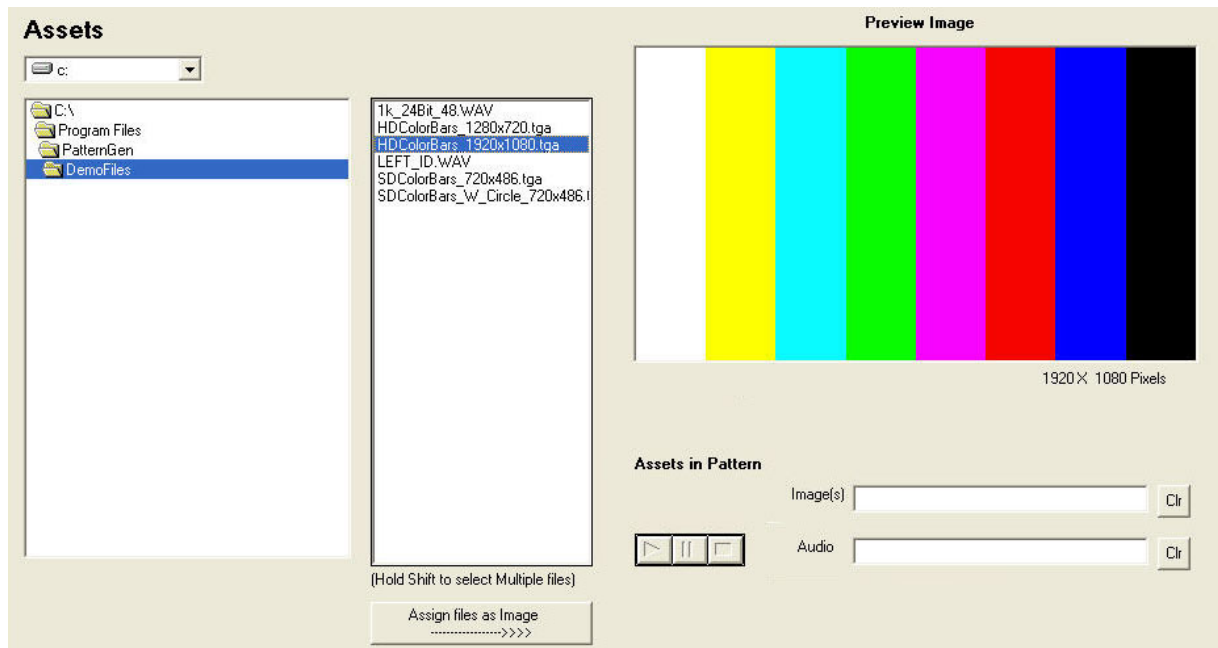
- NTSC
- PAL



ASSETS

Navigate to the folders that contain the files you want to use for your test pattern.

Double-click the folder to open it. The filenames of the files it contains display in the panel immediately to the right of the assets navigation panel.

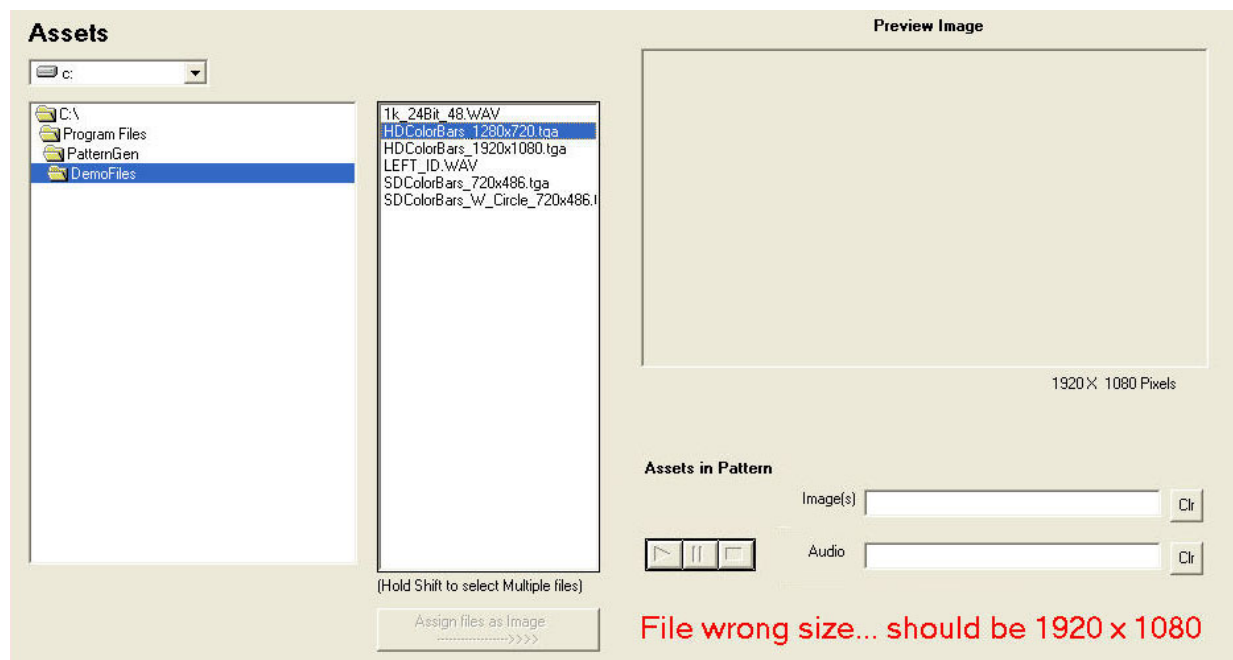


Preview Image

Preview files by selecting the filename(s) from the list. Note that the **Assign files as** button is dynamic — it reflects the type of file you have selected. When a .wav file is selected, the **Assign files as** button is labeled **Assign files as Audio**. When a .tga file is selected, the button is labeled **Assign files as Image**. When multiple .tga files are selected, the button is labeled **Assign files as Animation**.

Images display in the **Preview Image panel**. Preview audio files by clicking the **play** button.

If you have selected an image whose dimensions are incompatible with the format you selected, a message in red type displays in the **Pattern Generator** window indicating the correct dimensions you should use.



Use the **Assign files as** button to assign files to the test pattern you want to create. The assigned files display in the **Assets in Pattern** area immediately below the **Preview Image** panel. To change which files are assigned to the test pattern, use the **Clr** buttons next to the **Image** and **Audio** fields, then re-assign files to the pattern using the **Assign files as** button.

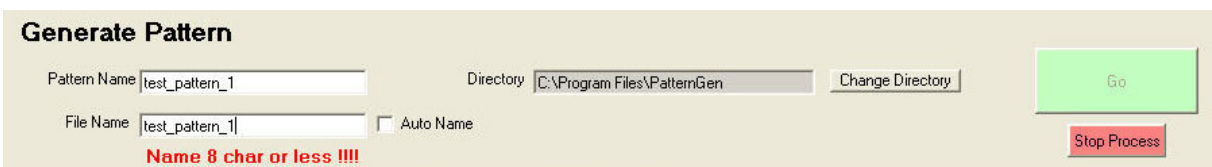
GENERATE PATTERN

After you have finished assigning files, you are ready to generate the test pattern.

1. In the **Generate Pattern** panel in the lower part of the **Pattern Generator** window, enter a pattern name in the **Pattern Name** field.
2. Enter a file name in the **File Name** field.

Note that you can instruct **Pattern Generator** to automatically name files by clicking the **Auto Name** checkbox.

3. File names are limited to eight characters. If you enter more than eight characters in the **File Name** field, you will see an error message.

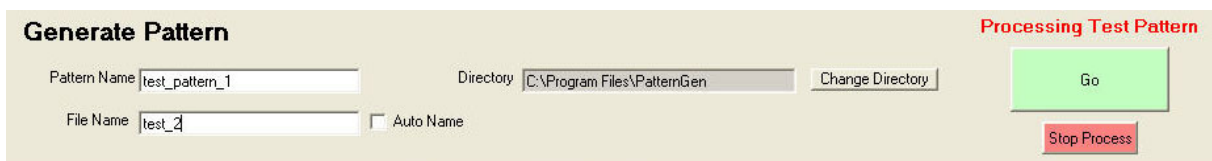


The screenshot shows the "Generate Pattern" panel with the following fields and controls:

- Pattern Name**: test_pattern_1
- Directory**: C:\Program Files\PatternGen
- Change Directory**: button
- Go**: green button
- File Name**: test_pattern_1
- Auto Name**: checkbox (unchecked)
- Stop Process**: red button

A red error message is displayed below the File Name field: **Name 8 char or less !!!!**

4. Verify the directory you want to use for saving the test pattern using the **Directory** field and the **Change Directory** button as needed.
5. Click **Go**. You will see a brief message indicating that the test pattern is being processed.



The screenshot shows the "Generate Pattern" panel with the following fields and controls:

- Pattern Name**: test_pattern_1
- Directory**: C:\Program Files\PatternGen
- Change Directory**: button
- Go**: green button
- File Name**: test_2
- Auto Name**: checkbox (unchecked)
- Stop Process**: red button

A red message is displayed in the top right corner: **Processing Test Pattern**

SECURE DIGITAL MEMORY CARD

Secure Digital (SD) Memory Cards must be formatted for FAT32 file structure. Generated patterns (.ptn files) are written to a directory that you specify in the **Directory** field shown above.

1. Manually copy the .ptn files to an SD Memory Card.
2. Insert the SD Memory Card into the Avenue 7400, the Avenue 9400 or the BrightEye 57.

WARRANTY AND FACTORY SERVICE

Warranty

This product is covered by a five year limited warranty. If you require service (under warranty or not), please contact Ensemble Designs and ask for customer service before you return this product. This will allow the service technician to provide any other suggestions for identifying the problem and recommend possible solutions.

Factory Service

If you return equipment for repair, please get a Return Material Authorization Number (RMA) from the factory first.

Ship the product and a written description of the problem to:

Ensemble Designs, Inc.
Attention: Customer Service RMA #####
870 Gold Flat Rd.
Nevada City, CA. 95959 USA

(530) 478-1830
Fax: (530) 478-1832

service@ensembledesigns.com

<http://www.ensembledesigns.com>

Be sure to put your RMA number on the outside of the box.